

LEP Auxiliary Lighting for drones only

FA-4x1 IR

Design for mid-size UAV
or weight-sensitive vessels



1 kg only

Warning : DO NOT direct light to human eyes in short distances.

Product testing video



Fixed angle illumination

Solid-state LEP

Run in sub-zero condition via (optional) add-ons

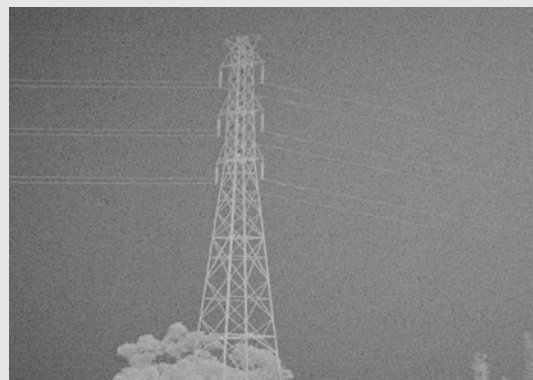
Recommend to pair with low-light surveillance camera with
IR filter On / Off switch. Capable of illuminating targets up to 1 km away.

IR searchlight / off



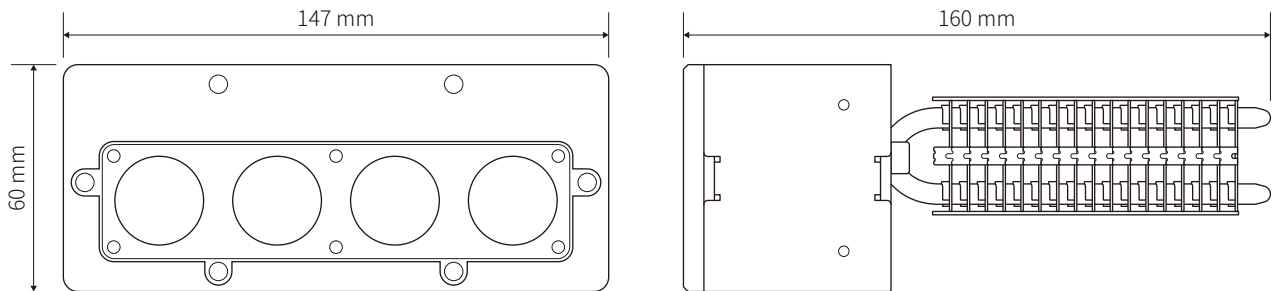
▲ No light source : coarse image particles, lots of noise, low contrast.

IR searchlight / on



▲ With IR light source : image is clear and high contrast.

*Dimension



X-Loupe FA-4x1 IR Specification	
Power Output (Electric, watt)	Max 36w
Optical / Electric Conversion %	Max 40%
LEP Cells	4 (4x1 matrix)
Lens Diameter	25mm
Beam Projection Angle (Degree)	* 2.6°
Cooling	Air
Dimension* (LxWxH)	160mm x 147mm x 60mm
Weight	1 Kg
Storage Temperature	-40~+85°C
Operating Temperature	0~+55°C
Command & Driver Module	
Control Interface	Serial UART Port TXD / RXD (TTL level) Baud Rate : 9600, 8, n, 1 Command Control : OFF / 5% / 10% / 50% / 80% / 100%
DC Input Range	12~19VDC
Power Supply	
Input AC Voltage	110~230VAC
Input Current Max.	2.0A
Output DC Voltage	12VDC
Output Current Max.	20A
Recommended Power Supply	*MEANWELL RSP-320-12
Recommended IP67 Power Supply	*MEANWELL HLG320H-12

★We (Lumos Tech.) reserves the right to change the product appearance or specification. The contents of catalogs / manuals are subject to change without prior notice.

Distributor



Products



7th floor, No.8, Wanhe St., Wenshan District,
11653 Taipei City, Taiwan, R.O.C.
TEL:886-2-2230-1168 FAX:886-2-2239-2112
e-mail: contact@lumos.com.tw
www.x-loupe.com